



CONCERT ORCHESTRA — AUDITION REQUIREMENTS FOR WW/BRASS/PERCUSSION

- A. All Woodwind and Brass students should prepare a solo (of about 2 minutes in length, no accompaniment), and provide the adjudicator with a copy of the solo. For all instruments, solos should come from either the WSMA Class B or Class A solo list, or something equivalent in difficulty and skill.
- B. All Percussion students should prepare **two short solos/etudes** from WSMA Class B solo list, or something equivalent in difficulty and skill, for both snare drum and a mallet instrument of their choice such as xylophone, vibraphone or marimba, as well as the scales below.
- C. All students should prepare to play all of the following scales with the articulations shown:

WOODWINDS

Scales should be memorized, slurred, ascending and descending chromatic scale demonstrating the candidate's full range and maximum controlled speed and accuracy.

The following memorized major scales demonstrating the candidate's maximum controlled speed and accuracy:

Flute

Musical notation for Flute scales. It includes three major scales: E^b Major/Concert E^b, G Major/Concert G, and C Major/Concert C. It also includes a chromatic scale (suggested range) for the instrument.

Oboe

Musical notation for Oboe scales. It includes three major scales: G Major/Concert G, A^b Major/Concert A^b, and C Major/Concert C. It also includes a chromatic scale (suggested range) for the instrument.

B♭ Clarinet

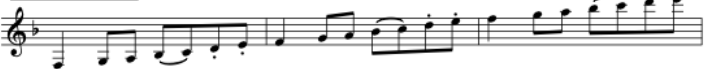
C Major/Concert B♭



D Major/Concert C



F Major/Concert E♭



Chromatic Scale (Suggested range)

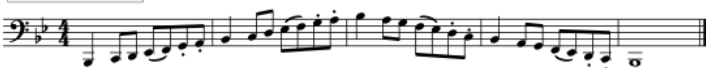


Bassoon

F Major/Concert F



B♭ Major/Concert B♭



G Major/Concert G



Chromatic Scale (Suggested range)



BRASS

Perform two major scales and two melodic minor scales of your choice in as many octaves as you are comfortable in the format shown.

Horn in F

Trumpet in B♭

Trombone

Tuba

Perform a slurred chromatic scale from your lowest comfortable note to highest comfortable note ascending and descending.

PERCUSSION

Select and perform two of the following major scales in the format shown: C major, F major, G major or D major (ascending and descending):



OTHER INFORMATION

- ❖ Please arrive early to tune and warm up.
- ❖ Check in at the check-in table when you arrive.
- ❖ Practice rooms are available for students to warm up.
- ❖ Students must remain quiet in the hallways during auditions.