



CONCERT ORCHESTRA – AUDITION REQUIREMENTS

A) All students should prepare a solo (of about 3 minutes in length, no accompaniment) and provide the adjudicator with one copy of the solo. For all instruments, solos should come from either the WSMA Class A solo list or something equivalent in difficulty and skill.

B) Students should prepare to play all of the following scales, with the articulations shown:

VIOLIN:

G Major, 3 octaves, spiccato, lower half of the bow



A Major, 3 octaves, staccato, middle of the bow



D Major, 2 octaves, spiccato, lower half of the bow

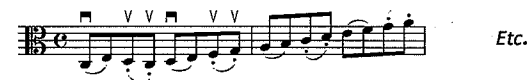


G minor, 2 octaves, harmonic OR melodic minor, 4 note slur



VIOLA:

C Major, 3 octaves, spiccato, lower half of the bow



D Major, 3 octaves, staccato, middle of the bow



G Major, 2 octaves, spiccato, lower half of the bow



C minor, 2 octaves, harmonic OR melodic minor, 4 note slur



CELLO:

C Major, 3 octaves, spiccato, lower half of the bow



E Major, 3 octaves, staccato, middle of the bow



G Major, 2 octaves, spiccato, lower half of the bow

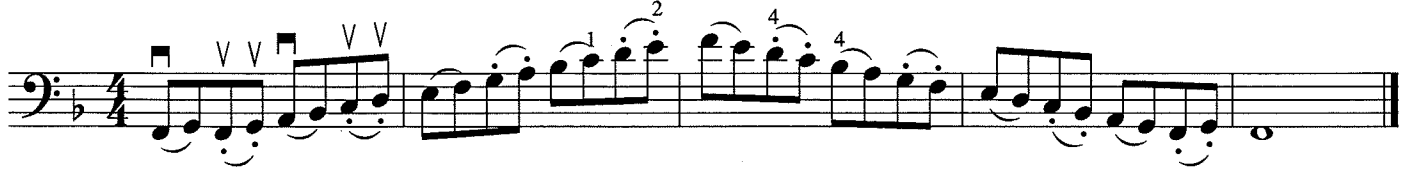


C minor, 2 octaves, harmonic OR melodic minor, 4 note slur

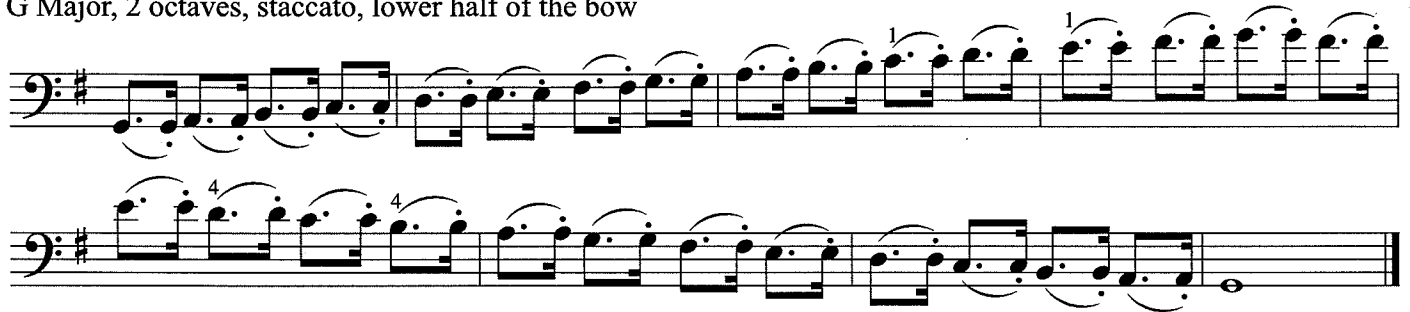


Bass Scales for Concert Orchestra

F Major, 2 octaves, legato/spiccato, lower half of the bow



G Major, 2 octaves, staccato, lower half of the bow



D Major, 2 octaves, spiccato, at the balance point of the bow



A minor, 2 octaves, harmonic (or melodic) minor, 4 note slur

